

USER MANUAL

M1 + A1

Bluetooth Microphone for GoPro®

REMOVU®

ENGLISH	3
DEUTSCH	9
FRANÇAIS	15
ESPAÑOL	21
中國	27
한국어	33


Join REMOVU Family


Product Website www.removu.com

Get support www.removu.com/support

Find Store information www.removu.com/distributors

 [Facebook.com/removuglobal](https://www.facebook.com/removuglobal)

 [Instagram.com/removu](https://www.instagram.com/removu)

 [Twitter.com/removuglobal](https://www.twitter.com/removuglobal)

 [Youtube.com/removu](https://www.youtube.com/removu)

Unauthorized reproduction of this document in whole or in part is strictly prohibited.
The content of this document may be changed at any time without prior notice.

1. Contents and Parts

Please make sure your package includes all of the following items.



M1
Set



M1 Waterproof
Housing



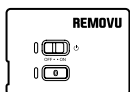
M1
Windscreen



M1 Swivel
Mount



M1 Swivel
Clip



A1
Set



A1
Connector

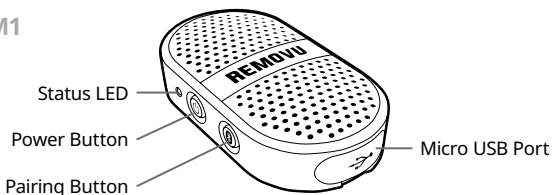


USB
Cable

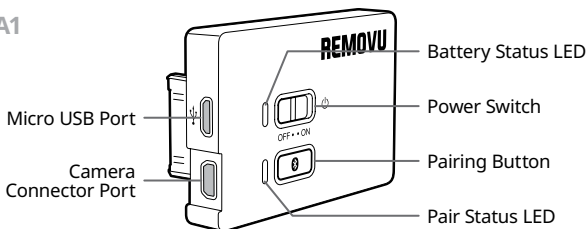


User
Manual

M1



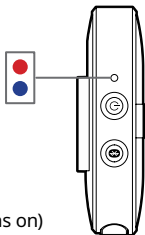
A1



2. LED Status Indicator

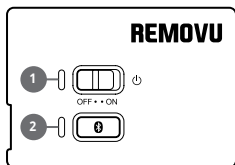
REMOVU M1

1. When Charging
 - Red LED: Charging
 - Blue LED: Fully Charged
2. Bluetooth Pairing
 - Red LED: Unpaired
 - Flashing red and blue LED: Pairing
 - Blue LED: Paired
3. Battery Status (Shows only when the device turns on)
 - 100% ~ 76%: Red LED flashes 4 times
 - 75% ~ 51%: Red LED flashes 3 times
 - 50% ~ 26%: Red LED flashes 2 times
 - 25% ~ 5%: Red LED flashes 1 time
 - Below 5%: Red LED flashes 10 times
4. Battery Status when being used
 - Below 5%: The device turns off after red LED flashed 10 times in 0.2 second interval.



REMOVU A1

1. LED1: Battery Status Indicator
 - Red LED: Charging
 - Blue LED: Fully Charged
2. LED2: Bluetooth Status Indicator
 - Red LED: Unpaired
 - Flashing red and blue LED: Pairing
 - Blue LED: Paired
 - Red + Blue LED: Audio Amplification Mode
3. Battery Status (Shows only when the device turns on)
 - 100% ~ 76%: Red LED flashes 4 times
 - 75% ~ 51%: Red LED flashes 3 times
 - 50% ~ 26%: Red LED flashes 2 times
 - 25% ~ 5%: Red LED flashes 1 time
 - Below 5%: Red LED flashes 10 times
4. Battery Status when being used
 - Below 5%: The device turns off after red LED flashed 10 times in 0.2 second interval.

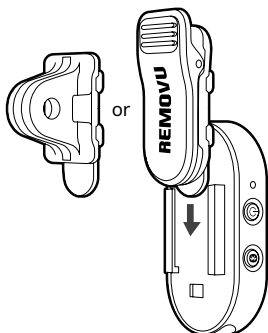


3. How to use REMOVU M1 / A1

REMOVU M1

Attaching swivel collar clip or mount connector on M1.

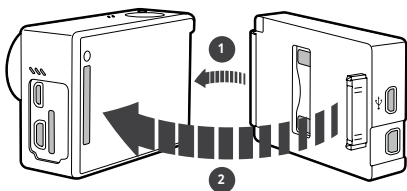
1. Slide the collar clip into the guide rail located on the back of M1.
2. Clip-on the device to your collar or mount any place you wish to attach it to.
3. You can rotate the M1 in the desired angle.



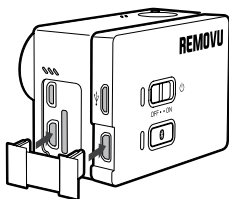
REMOVU A1

Attaching the A1 to GoPro.

1. Attach the A1 to the back of your GoPro as illustrated below.



2. Make sure plug the device into the slot all the way.
3. Plug the connector to the GoPro and the A1.
4. To detach, just follow steps backwards.



4. Pairing the Device

1. Pairing A1 to M1
 - Turn on the A1, and press the pairing button.
 - Turn on the M1, and press the pairing button.
 - When the devices are paired, the LED indicators on both devices will turn blue.
2. Pairing A1 with other Bluetooth microphones (headsets).
 - Turn on the A1, and press the pairing button.
 - Turn on the power of the device you are trying to use with A1 and activate the pairing mode of the device.
 - When the devices are paired, the LED indicator will turn blue.

5. To Record

1. When the devices are successfully connected and A1 and its connector are plugged in correctly, the camera will record the sound received from the M1 to the video.
2. Switching Microphones: If you want to switch from M1 to GoPro internal microphone while A1 is connected to the GoPro, use the pairing switch on the A1 to switch between microphones.

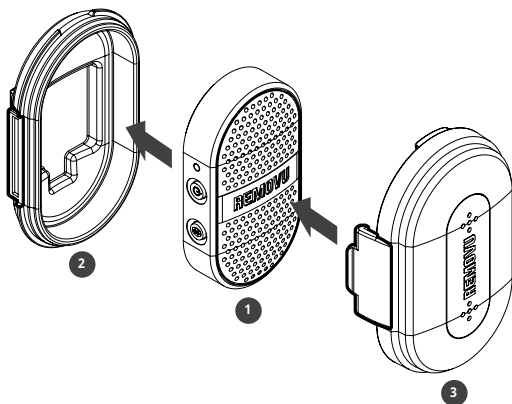
6. Audio Amplification Mode

This mode is used when M1 is being used in the waterproof housing case. It amplifies the sound recorded through M1.

How to Activate

1. While the devices are paired, press the pairing button on A1.
2. When you see both red and blue LED lit at the same time, it means you have successfully activated the audio amplification mode.
3. To deactivate, press the pairing button on A1 again.

7. Waterproof Housing



With the waterproof housing, you can record the sound even in wet condition.

To use the waterproof housing,

1. Place the M1 onto the bottom part ② of the housing.
2. Place the lid part ③ onto the bottom part and assemble until the the two brackets clicks to the bottom part.
3. Turn on the Audio Amplification mode to record your sound.

To remove the waterproof housing,

1. Lift up the two brackets that are holding the top and bottom parts of the case together.
2. Pull off the top part from the bottom part.
3. Remove the M1 from the case.

8. Warranty Information

Standard Limited Warranty

Essel-t Co., LTD. ("essel-t") warrants that essel-t's devices and accessories ("Products") are free from defects in material and workmanship under normal use and service for the period commencing upon the date of purchase by the first consumer purchaser and continuing for 18 months period of time after that date.

Exclusions and Limitations

This Limited Warranty is conditioned upon proper use of Product by Purchaser. This Limited Warranty does not cover:

- (a) Defects or damage resulting from accident, misuse, abnormal use, abnormal conditions, improper storage, exposure to liquid, moisture, dampness, sand or dirt, neglect, or unusual physical, electrical or electromechanical stress;
- (b) Scratches, dents and cosmetic damage, unless caused by essel-t;
- (c) Defects or damage resulting from excessive force or use of a metallic object when pressing on a touch screen;
- (d) Equipment that has the serial number or the enhancement data code removed, defaced, damaged, altered or made illegible;
- (e) Ordinary wear and tear;
- (f) Defects or damage resulting from the use of Product in conjunction or connection with accessories, products, or ancillary/peripheral equipment not furnished or approved by essel-t;
- (g) Defects or damage resulting from improper testing, operation, maintenance, installation, service, or adjustment not furnished or approved by essel-t;
- (h) Defects or damage resulting from external causes such as collision with an object, fire, flooding, dirt, windstorm, lightning, earthquake, exposure to weather conditions, theft, blown fuse, or improper use of any electrical source;
- (i) The battery has been charged by a battery charger not specified or approved by essel-t for charging the battery;